

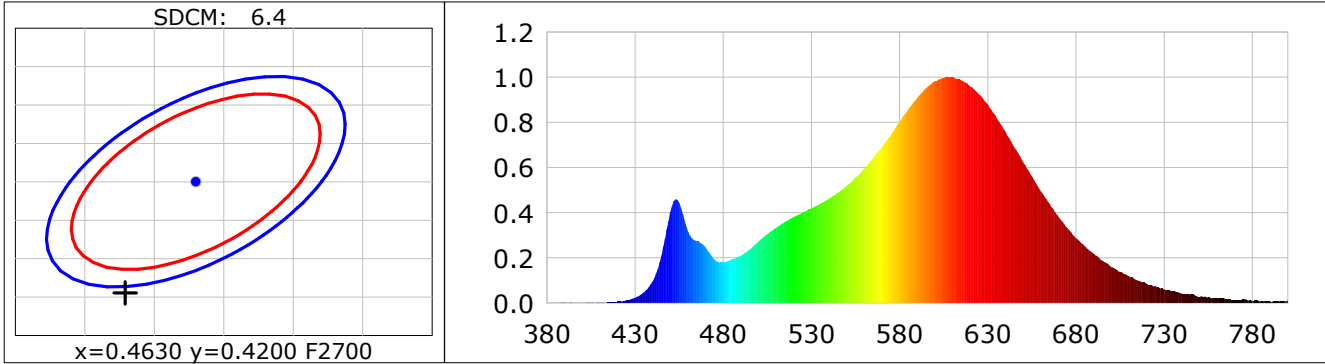
Lightsource Test Report

Product Infomation

Product Category: LED STRIP	Product Type: LED STRIP
Product Spec: LYNX 12	Product Number: 225
Manufacturer: TECSOLELED S.L.	Buyer: TECSOLELED S.L.

CIE Colorimetric Parameters

Chromaticity coordinates: $x=0.4579$ $y=0.4055$ $u(u')=0.2635$ $v=0.3501$ $v'=0.5251$
 CCT: $T_c=2688K$ ($duv=-0.00173$) Color Ratio: $R=0.256$ $G=0.720$ $B=0.025$
 Peak Wavelength: 606.3nm Half Bandwidth: 112.6nm
 Dominant Wavelength: 584.9nm Color Purity: 0.592
 CRI: $R_a=83.3$, $avgR(1\sim14)=79.1$, $avgR(1\sim15)=78.8$ TM30: $R_f=85$, $R_g=95$
 GAI: $GAI_BB_8=98.9$, $GAI_BB_15=107.3$, $GAI_EES=47.7$
 R1 =83 R2 =94 R3 =93 R4 =81 R5 =84 R6 =94 R7 =79 R8 =58
 R9 =12 R10=87 R11=81 R12=78 R13=86 R14=97 R15=75
 Color Quality Scale: $Q_a=83.0$, $Q_f=85.0$, $Q_p=85.9$, $Q_g=91.4$
 Q1 =78 Q2 =93 Q3 =85 Q4 =81 Q5 =84 Q6 =85 Q7 =84 Q8 =85
 Q9 =93 Q10=91 Q11=87 Q12=84 Q13=82 Q14=74 Q15=75



Photometric Parameters

Luminous Flux: 701.95 lm Efficiency: 140.42 lm/W Radiant Power: 2.187 W
 Total mains efficacy: 130.03 lm/W Energy Efficiency Class: E (EU 2019/2015)

Electric Parameters

Voltage: 24.000V Current: 0.2083A Power: 5.00W
 Power Factor: 1.0000 Frequency: 0.00Hz

Test Infomation

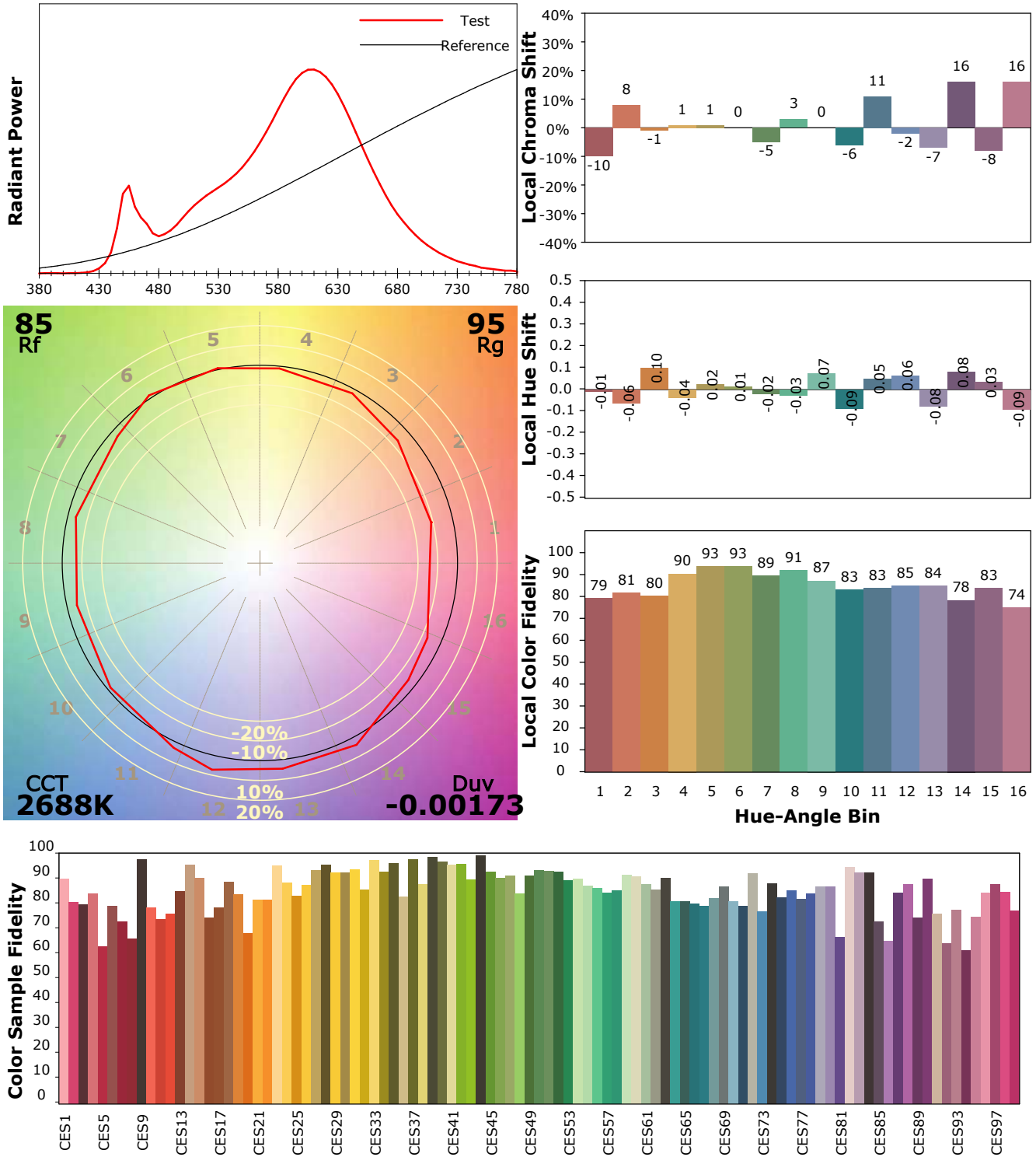
Scan Range: 380~800:1nm Photometric Method: sphere-spectroradiometer
 Stabilization Time: 0 Sec ALC.: 1.0000 Photometric Condition: Sphere diameter: 1.50m, 4PI
 Max of Signal: 47793 (2351) CCD Integration Time: 981.43 ms

IES TM-30-18 Color Rendition Report

Product Information

Product Category: LED STRIP
 Product Spec: 21059602440512
 Manufacturer: TECSOLELED S.L.

Product Type: LED STRIP
 Product Number: 225
 Buyer: TECSOLELED S.L.



Condition: Tx:19.9°C, Ti:19.0°C, R.H.:60%
 Test Lab: TECSOLELED S.L.
 Operator: JORDAN GIL DIAZ

Test Device: Inventfine CMS-2S (Plus)
 Test Time: 2021-10-28 10:29:29
 Inspector: